



Group of Forty GLOBAL Newsletter | Issue 293 | March 2021



## Ecocide and the Repair of the Earth

*By David K. Miller*

Ecocide is defined as the destruction of the Earth's biosphere by the dominant species on the planet, that is Mankind. There have been instances of civilizations in the past, such as the Mayans, who overused their land. They over-harvested their plants and forests, which led to drought and food shortages. This contributed to the downfall of their society. Unlike the Mayans' destruction of their environment, our current ecocide is multi-level and is coming from many different sources. Besides over-farming and destruction of our forests, we have also radiation contamination, global warming from greenhouse gases, pollution of waterways and rivers from industrial wastes, and much more. In addition to all of this, we have over population problems. In the midst of these problems, we are experiencing a sudden and dramatic extinction of plants and animal species around the globe, which are a direct result of our ecocide activities. Many of these plants and animals are necessary for our food.

Is ecocide part of humanities DNA? The word "ecocide" is derived from the word suicide. Man is the only known species on the Earth which commits suicide. And Mankind is the only known species on Earth involved in war on a mass level against each other, committing homicide (Perhaps another species that wars against each other are ants). How are we to understand this phenomena of destroying our biosphere? Kabbalah says that humanity has an inclination towards doing good (Yetzer Ha -Tov) and an inclination towards doing evil (Yetzer ha-rayah). We must exercise our inclination towards doing good through service, charity and working to repair the biosphere. Practicing doing good is like exercising a spiritual muscle. The more you exercise that spiritual muscle, the stronger your inclination to do good will also increase. And with a strong inclination to do good, we can overcome the inclination to do evil and help move humanity towards the needed repair of the world (Tikkun Olam).



David K. Miller |  
Co-Founder  
Group of Forty  
davidmiller@groupofforty.com

## STARSEEDS Counseling

Dear Gudrun,

I think I have an unusual situation given the times we are living in. I am doing better than I ever have! I live comfortably and have all my needs met and then some. I live off of a generous inheritance which allows me to donate funds to various local organizations. Limiting social interactions has allowed me to focus better. I don't get as caught up in relationship issues. Most of my interactions are over Zoom

which helps me monitor my tolerance of others. If I feel overwhelmed, I just click off or mute and take my image off! I can get up and walk around and do whatever I need to do to regulate myself. I like to interact with some people and I have friends but I am realizing how beneficial my alone time is. My concern then is, am I turning into a recluse? Should I force myself to do more out in public? Am I damaging my mental health?  
Worried

Dear Worried,

I am guessing that you might have a mild form of Attention Deficit Disorder (ADD) or that you are on the autism spectrum. Many children now who have these issues are thriving with home-based schooling for the same reasons you mentioned. I think you are learning how to regulate yourself better emotionally because of the circumstances of this time. I know you do a lot to help others and I think you do not need to worry about damaging your mental health. You are learning more about yourself and about how to cope better in this world. Please don't judge or compare yourself to others. You are living in divine grace and the rewards of good karma. Enjoy the blessings of your good life.

Blessings, Gudrun



I am Gudrun Miller  
and I have been a  
professional counselor  
for over 30 years.

## Group of Forty Monthly Lectures

with David K. Miller



The next lecture is on Saturday, April 3, 2021 at 5:45 - 6:45 p.m. Phoenix, Arizona time (MST). We will be meeting on [freeconferencecall.com](https://freeconferencecall.com) international phone line, which is specific for each country. An email announcement will be sent out one week prior with the freeconferencecall phone number and access code.

Contact David Miller at [davidmiller@groupofforty.com](mailto:davidmiller@groupofforty.com) for more information. The re-transmission of the lecture for Europe will be on Sunday, April 4, 2021 at 10:00 a.m. Phoenix, Arizona time. You can check the teleconference/lecture time against your

local time by using either: [www.timeticker.com](https://www.timeticker.com) or [www.thetimenow.com](https://www.thetimenow.com)

## MEETING OUR GLOBAL MEMBERS

### Pepe Lema



I'm Pepe Lema and I live in San Martin de los Andes in Argentina. SMAndes is a town in northwest Patagonia, Argentina. I am the Group of Forty coordinator for this area. The town lies on the banks of Lake Lácar. It is a particularly beautiful part of Argentina and, like the Grose Valley, in Australia, the Arcturians have a special love for this place. The first etheric crystal to be placed on Earth was placed in Lago Puelo in 2002. Lago Puelo is about 350 klms south of SMAndes. Julianio said "Lago Puelo is very close to Mother Earth and it is easy to communicate telepathically with Mother Earth here because Mother Earth is more open in that area and you can communicate with her about all matters, not just local ones." We activated a Planetary City of Light in SMAndes in 2010. We understood the value and responsibility of being a Planetary City of Light and the way it influences the energy of the community, the environment, and our personal journey as well. We are also blessed in having a Ladder of Ascension here in SMAndes. In 2011, Julianio and the Arcturians placed a double etheric crystal in Lago Puelo. Julianio said: "We send this etheric duplicate of the crystal to be downloaded on the crystal of Lago

Puelo now. The new duplicate has been downloaded and many Starseeds are there rejoicing as they feel the energy getting stronger and more elevated. Now they are very excited and happy as this crystal represents the manifestation of 5th-dimensional energy on Earth". We, the Arcturian planetary healers of San Martin de los Andes in Argentina, feel happy to be part of the GOF and feel our heart connected to each one of you.

I love the Arcturians. They are my Galactic family of light. They are my focus morning and night. In 1998 I met David and I started working with the GOF in 2002. From that moment they were in my heart. My purpose in this life is to ascend, and help our Mother Earth in her ascension. This intertwined energy and the relation with our

soul family stimulates the energy union in GOF, promoting the Arcan power of the thoughts and the quotient of spiritual light of each one of us. Because of this, we feel very grateful to David and to all and each one of you that are reading these words, for helping to understand which is the mission in this life, to make us feel that we are all united with the galactic mission of the personal and planetary ascension of Mother Earth.

Pepe Lema  
PCOL of SManDes

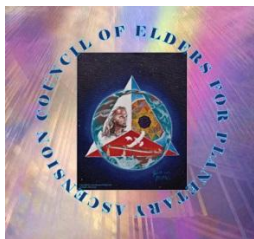
About 8 or 9 years ago Juliano asked us to say what the mission of the PCOL was.

#### PCOL SAN MARTIN DE LOS ANDES MISSION

The Lago Puelo and Serra da Bocaina Crystals are the roots of the Planetary Tree of Life and they hold and manifest the 5D energy. The Planetary City of Light of SMA has the responsibility to:  
Make Energy of the 5D manifested in the Crystals, flow and nourish all spheres and Planetary Cities of Light and the Vibration of the Planetary Tree of Life paradigm be manifested from the root to the crown.

Make Energy from the 5D interact with the thought field (noosphere), the biosphere and the spirit of our Mother Earth.

Create a unified field of consciousness, to expand it all over the energy network of Planetary Cities of Light and thus sustain a new level of consciousness for all humanity.



## COUNCIL OF ELDERS REPORT

### The Medicine Wheel and the Star Family

*Juliano by David K. Miller*

*We are happy to announce that this is the fifth part of a series of 8 articles from a 2011 channeling by Chief White Eagle and Juliano through David K. Miller. This information is relevant to our planetary*



*healing projects, and we would like to bring this information to the attention of our members again, especially since we have a large number of new members who may have never seen this lecture. For the final installment, we will add updated information on the medicine wheel, given us recently by Juliano.*

## Part 6

One of the ideas of the harmonic convergence, such as 11-11-11, 12-12-12, and other of the exercises is to reinforce the sending out of harmonic light so that higher beings will continue to be attracted to and come to this planet. That is one of the main missions of many of you Starseeds, that is, you want to contribute to and develop new techniques for using harmonic energy and the harmonic attraction force. One of the greatest tools for this is using the Medicine Wheel.

Now, I will turn the next part of the lecture over to Chief White Eagle. I am Juliano. Good day.

*Hey ya ho ya hey ya! Hey ya hoooooooooooo.* Greetings. All my words are sacred. I am the Chief White Eagle. I welcome this opportunity for you and me to be together. I want to acknowledge that we are creating with you a beautiful circle above this planet. We, the Native Peoples, the Ascended Masters, the higher Grandmothers and Grandfathers are continually participating in a great Medicine Wheel above this planet. We are in the fifth dimension, and with our work, we are interacting to bring down the power of harmonic light that Juliano has talked about. We want you to be participants in a great Medicine Wheel, which is the Medicine Wheel that encompasses the whole Earth. We want you to continue to build Medicine Wheels around this globe in all the different areas that you can reach. You want to increase the power of your Planetary Cities of Light. You want to attract more people and more lightworkers. One of the greatest ways to do this is to use the Medicine Wheel.

I want to say to you that in our teachings, the Medicine Wheel is a sacred space. The Medicine Wheel is a great gift that we have received, and you have the ability now to create a sacred space by building your own Medicine Wheel. You can use that sacred space. You can bring your powers into it. The Medicine Wheel can amplify and can increase your powers of harmonic thinking. The Medicine Wheel is a wheel of harmony. Harmony is the opposite of polarization.

You have all experienced enough of polarization. I know that many of you have discovered that polarization is tiring. It wears out the systems. Welcome any opportunity to be able to experience harmony. Know that the Medicine Wheel can assist you in experiencing harmony with your personal incarnational cycles, with the Earth and with the galaxy. We are particularly interested in working with the Medicine Wheel in creating harmonious energy to the Earth. We know that our prayers can be more powerful when they are done in the Medicine Wheel.

I see many new Medicine Wheels being developed around the planet. I see many of the Medicine Wheels already in existence in the Group of Forty to be connected. Think now of your own Medicine Wheel. I know many of you have a Medicine Wheel now. Think of it at this moment. If you don't have a Medicine Wheel, visualize where you will want to put it. You can put it in your house. It can be built even in your living room. It could be built in your backyard. Visualize the Medicine Wheel that you have or that you are going to have, and connect with that harmonic light and harmonic energy in that wheel. Let that light and that energy from your Medicine Wheel radiate and emanate throughout the planet. Let it emanate also off the Earth and emanate into the ethers so that you are able to attract to your higher personal energies of healing in this incarnation and also higher planetary powers for the Earth healings that you have been sent here to do. Use the Medicine Wheel for attracting also the great powers you are developing to experience galactic connections and for attracting a greater galactic energy. *Hey ya hooooo. Hey yaaa hooooo. Hey ya hooo.*

Using the Medicine Wheel will be a powerful way for you to begin 2012. You will be able to come into a powerful harmonic energy field using the Medicine Wheel. We are all related. I am Chief White Eagle. *Ho!*

*(To be continued)*



### For the Council of Elders

Birgit Smothers  
GOF USA Group Coordinator  
Council of Elders Member  
birgit@groupofforty.com



# Planetary Healing BIORELATIVITY Earth Balance Teams

**Remember**, daylight saving comes into effect on March 14th. Make a note of the new times for your zone. AZ does NOT recognize daylight saving.

**Please note** that Elisha in The Netherlands is presenting Biorelativity Meditations in the Dutch language every Tuesday evening at 20.15 PM Amsterdam / 12.15 PM AZ time on the free conference call number with the access code 7431713. Email: [elisabeth.zon@gmail.com](mailto:elisabeth.zon@gmail.com)

**To all members of Group of Forty, we need Biorelativity Meditation Presenters.** Please, if you have the time and the desire to be of service to the Group, would you be in touch with Jane. You will be trained and it's wonderful to be part of that service to Group of Forty members.

All meditations are placed on the closed Facebook page and also on the web pages. There is also a **mailing list for anyone who wants the meditations sent to them** so they can download to listen to at any time. Just email me: [janes carratt@gmail.com](mailto:janes carratt@gmail.com)

The Biorelativity Team is presenting a minimum of 14 meditations per week. We are letting Earth know we are here and we are supporting her and she will respond more favorably BECAUSE she knows we are here. **REMEMBER.....**A planet cannot ascend by herself. A planet must have higher thought forms, higher beings, on it. Biorelativity is the ability to interact with the Spirit of the Earth with higher consciousness. Biorelativity can create unity consciousness and a unified energy field. Noorelativity is the ability to send thoughts and energy into the Noosphere for the purposes of manifesting a higher healing light throughout that planet. There is a monthly calendar on the web pages. Contact Jane for further information you may need. [janes carratt@gmail.com](mailto:janes carratt@gmail.com)

**Please note that we have changed the time of the Monday and Tuesday meditations from 5pm AZ to 6pm AZ.**

We are utilizing the **Cosmic Cross** in many of our meditations now. There is a focus from the three centers: The Ring of Ascension, The Arcturian Crystal Lake and the Central Sun, directly at the core of the Earth. We create the possibility of light reaching Earth from the Central Sun, of Earth sending light to the Ring of Ascension, of the Ring of Ascension sending light to the earth's core and we have the possibility to go directly to the Arcturian Crystal Lake. These are all corridors and pathways.

We are considering placing YouTube videos of our Biorelativity meditations on the web pages. However, all contributions to this **MUST** be placed before the Biorelativity Committee for approval.

The global Biorelativity Committee is presenting a worldwide meditation on March 21st. We will be using the paradigm of the Cosmic Cross. This will be on a GoToMeeting link. The time will be 3 pm AZ. Remember to adjust for your time zone. The presenters will be Juliano through David, Janine, and Jane. This is to celebrate the Spring Equinox for the Northern Hemisphere and the Autumn Equinox for the Southern Hemisphere.

Remember to keep checking out our regularly updated [www.earthgmatters.world](http://www.earthgmatters.world)



Jane Scarratt  
National Coordinator in Australia  
For the Group of Forty  
[janes carratt@gmail.com](mailto:janes carratt@gmail.com)

# Planetary Cities of Light Report



Robert Maldonado  
International PCOL Coordinator  
[rrmaldo@gmail.com](mailto:rrmaldo@gmail.com)



## News from the Planetary City of Light Project

The level of excitement for the project remains very high. In January, we activated the PCOL's of Vicente Lopez, in Argentina and York, in the United Kingdom. In February we activated the PCOL of Palmira, in Colombia and will be activating two new PCOL's in Havana, Cuba and Perth, Australia in March, and Quito, Ecuador and Costa Rica in April. Many more are being planned.

The Spanish Quarterly meeting on 21 February was a huge success. At the meeting the Santiago de Cali, Colombia PCOL gave a wonderful presentation showing positive changes since its activation. As a global family we are always interested in hearing about how our brothers and sisters are doing in their PCOL's and especially the positive effects that the Planetary Cities of Light are having now.

**Sylvia Granados, the coordinator of the Guadalupe PCOL in Costa Rica** shared these experiences from her recent visit to Volcan Poas in Costa Rica:

"I write to tell you that on Sunday 7 members of the Group of the City of Light of Guadalupe attended to meditate with the energies of the Volcan Poas etheric crystal. It was just wonderful. The strength, energy, and power emanating from the Crystal had us all fully ecstatic within the 5D energy field. The meditation we did connected us with so many wonderful things that the Crystal brings, intertwined with the energy of the Mt. Shasta Crystal because it is a Crystal that works in conjunction with that of the Poas and other energies of Crystals that were present, in addition to the masters and guides.

In the end when we finished meditating the electromagnetic energy was very strong. Some of us had some sensations of dizziness until we can make landfall and re-root ourselves to the Mother. We were giving power discharges. Several members felt those downloads. For example, Michelle, when she got out of the car, gave her a heavy shock when I touched the edge of the car. Alex says that when he got home and went to bed, he saw sparks coming out of his energy field, and most of it being felt inside that spiral of energy. It was very beautiful. The day was sensational."



Fernando Uribe, the coordinator of the PCOL of Santiago de Cali reported on progress in his PCOL:

"The city of Santiago de Cali was activated as a planetary city of light on November 21, 2020 and perceiving changes in the city since that date, was not easy because we are living a planetary situation that has greatly impacted the life, relationships and coexistence of human beings. However, we perceive subtle changes in the vibration of the spaces of the city through which we mobilize that translates into days of calm and tranquility, as well as in the daily attitudes of the people who are in our radius of action that face the current situation in a positive way.



We decided to consult at the social observatory of the city and found a very significant change that particularly caught our attention and is that Cali represents 23% of homicides committed in capital and 9% compared to Colombia and has achieved a decrease of 3.7% being "the highest rate of homicide reduction than observed to the capitals as a whole". That this city like the others show a reduction in homicide levels is normal for all the measures taken by the pandemic, but Cali's timely difference from the other cities leads us to think that this happened thanks to the activation of the city as PCOL, carried out three months ago, which increased its level of vibration, because Cali is one of the four cities that has recorded the most violence in the country for many years and that numerically it can be shown that it made a difference compared to the other capital cities tells us that a wonderful energy is acting.

There have undoubtedly been changes in the level of vibration of the city, some as striking as that mentioned in the initial part of the report and others very subtle.

In this regard we would like to comment that in the space of the house of the coordinator of the PCOL Cali, where the meeting was held for the planting of the crystals, a papaya tree was planted that has grown beautifully very fast, is leafy and to date is loaded with 40 fruits and continues to bloom. This is unusual because papaya plants are known to grow between 3 and 5 months and bear fruit until a year after being sown.

Since becoming a PCOL, each of the members has personal experiences that arise thanks to the elevation of the energy level. In general, it has been an experience that has allowed us to connect with light, with personal and planetary harmony.

**When asked how can you determine if your PCOL work is raising your city's spiritual light ratio? What did you notice?**

It is a very interesting question that at first questioned the coordinator because he had not imagined it and led him to seek an answer from his knowledge, being able to infer a positive response that results in an improvement of 37% of the spiritual quotient of the city of Santiago de Cali.



We thank both Sylvia and Fernando for their reports and I encourage everyone to send me their stories so we can share them with the GOF family. Let's keep our eyes open to see the changes that are happening now in our PCOL's and let our thoughts and energies go to supporting the positive change that's is happening. We are sowing the seeds of the Future Earth.

**Be sure to come and join us at our next Global PCOL Network Meeting on March 28, 2021. We are a family and want to help each other in the process of planetary healing. As we join together over and over, we build our unity consciousness and strengthen ourselves and the network.**

**How are they doing their meditations and how are they organized or how are they doing?**

Since October we have made contact with PCOL National Coordinator Martha Briceño and began participating in the weekly meditations held on Thursdays. The group is cohesive and we are part of the members of the cities of light that are in our country such as Chía, Bogotá, Roze, and Cali, and the coordinators are rotating the meditations of Biorelativity weekly.

Our awareness of Starseeds with regard to planetary cities of light has been further expanded as a Spanish-speaking group in Latin America. Initially, the coordinator of Santiago de Chile and Santiago de Cali reached an agreement to start the expansion of Spanish-speaking Planetary Cities of Light and be able to join Argentina, Peru, Costa Rica, and Colombia. Agreeing to take a monthly meditation on the

first Thursday of each month at 7:00 pm Buenos Aires time. We have already successfully done our first group meditation on Biorelativity. We have just made contact with the coordinators of Mexico and Ecuador and they have agreed to participate.

At the local level, we motivated the coordinator of PCOL Rozo today to realize the idea for Rozo to become a Planetary City of Light and that it was recently activated.

On the other hand, Fernando, the coordinator, and Olga Liliana have joined the Arcturian Virtual Temple in Spain and participated in the weekly meditations of the Temple of Tomar on Earth and in the Biorelativity exercises.

Thank you for your fabulous support!

Blessings,  
Bob Maldonado



On Friday, March 5th 2021, the entire East Coast of the North Island of New Zealand was struck by **3 huge earthquakes**

7.1 mag at 2.30am

7.4 mag at 6.31am

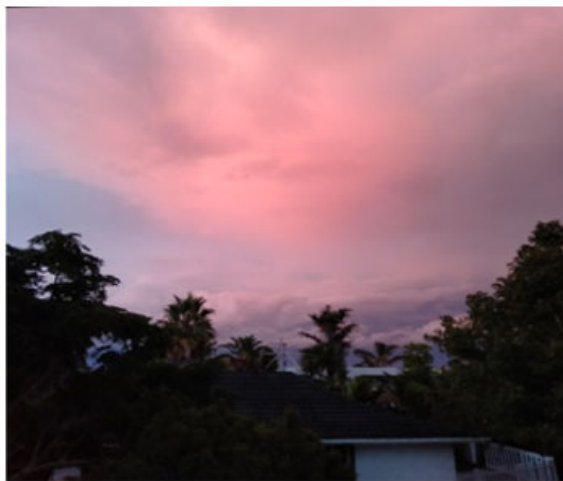
8.1 mag at 8.28am

This swarm of earthquakes triggered tsunami warnings up and down the East Coast. Coastal towns were evacuated. People were told to leave their homes and businesses and go to higher ground and stay until the warnings were lifted. The only area that did not have this requirement was Auckland and in particular East Auckland. Creeks and small rivers on the east coast emptied. Bays experienced a low tide and a high tide within 3 hours instead of the normal 6 hours plus cycle, and these were King Tides. A research plane had flown up the entire East Coast and reported the ocean had turned brown. Powerful surges of water flooded into bays up and down the coast. But thankfully there was no loss of life or injuries.

The warnings were lifted early afternoon that same day, and people were allowed to return to their homes. Many had been shaken and shocked, this had been a disturbing experience.

I live close to the water, so I decided to go for a walk in the fresh air that afternoon. I sat by the water's edge and I felt emotions rise. Sadness for our planet, our home, overwhelmed me. I asked her "what is wrong, how can we help you" And I told her "I am so sorry you are in such pain", and felt the need to respond in this way. I stayed giving her love, until I felt a sense of peace and calm in her and myself. I thanked her for keeping us safe and for protecting East Auckland, and the entire North Island, and promised to continue with the work we do, to help her heal.



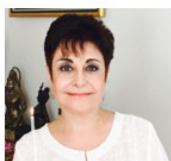


Janine Malcolm New Zealand  
Country Coordinator  
[janinemalcolm@xtra.co.nz](mailto:janinemalcolm@xtra.co.nz)

## Report from GOF Mexico

By Ana Rosa Moreno

Chichén Itza was a large pre-Columbian city built by the Maya people on the Yucatán Peninsula in Mexico. It was a major focal point in the Northern Maya Lowlands from 600 until 1200 AD. It was one of the largest Maya cities and it was likely to have been one of the mythical great cities. There are many temples and pyramids. The main areas of interest are: Temple of the Warriors is a big temple with hundreds of columns; the Great Ballcourt is the largest known ancient sports field in Central America; Pyramid of Kukulcán that dominates the center of the archaeological site; and the Sacred Cenote is an underground lake or river, it is where royalty gave gifts to the gods. This archeological site was named a UNESCO World Heritage Site in 1988. In 2009, 11 members of GOF1 from Mexico went to Chichén Itza to download a duplicate of the shimmering crystal in Chihuahua, guided by Juliano. It was a wonderful experience.



Ana Rosa Moreno  
GOF Mexico  
[Ana\\_rosa\\_moreno@yahoo.com](mailto:Ana_rosa_moreno@yahoo.com)



#### Group of Forty activities

The fourth Saturday of each month is the monthly GOF/PCOL meeting day for active groups in Spain. On that day, all the PCOL groups carry out a monthly Reactivation of their PCOL in the time window from 12 to 15:30 and, in the afternoon, both the GOF groups and the PCOL groups meet for the connection with the monthly online meditation that the Arcturian School organizes. Other GOF meetings are at the discretion of each group.

#### Online monthly Advanced Biorelativity exercises

The Arcturian School organizes two monthly online meditations in the Zoom Webinar, one on the second Saturday and the other on the fourth Saturday, at 5:00 PM, in both cases with the aim of helping to repair the Earth as a living being. There are more than 50 assistants from Spain, France, Mexico, Brazil, and South America attending the meditations.

#### Online meditations at the Arcturian Temple

The Arcturian Virtual Temple is a virtual global meditation space reserved for the members of the Group of Forty, which is connected with our Temple in the Arcturian School and with the Temple of Tomar in Arcturus. It has been founded by the Arcturian School at the direction of Tomar to help accelerate the planetary Noosphere and human evolution. The Temple of Tomar on Earth has 12 Temple Guides and offers a daily meditation on the Wormhole Classroom Webinar in Spanish, French, English, and Brazilian Portuguese.

#### Online meditations for Spain and COVID 19 Protection

We carry out these meditations on the first, second, and fourth Saturday at 12:00 noon. These meditations are applied to Spain but they serve as training and examples to apply them to other countries and also to the Planetary Cities of Light.

Check the calendar on the Facebook Groups:

<https://www.facebook.com/groups/templovirtual/>  
<https://www.facebook.com/groups/grupo40Spain>



Magda Ferrer

[magdagof@gmail.com](mailto:magdagof@gmail.com)

National coordinator of the Group of Forty in Spain

Director of the Arcturian School and Tomar Temple on Earth

## The Calling of the Sacred Triangle - *By Kaylea*

Hello, I'm Kaylea. I currently reside in South Wales, UK. For the past 4 years, I have been working as a Master NLP Coach. I assist my clients in their inner healing and educate them on the mind/body connection and it how relates to the external environment. In the past 12 months I awakened more fully into my Starseed origins (I am very proud to be an Arcturian Starseed). Much occurred within me as I began to remember my galactic connections and the new mission to finding my soul's purpose began.



I connected with a fellow Arcturian Starseed who channeled through for me my Soul's signature Energy painting. In the same week this connection and channel came through I had been guided to David's books and the 'Connection' was made. I couldn't believe my eyes when I saw my channeled painting and page 203 of Connecting with The Arcturians II! I had never come across the Sacred Triangle before this point.

I am delighted to be connected with The Group of Forty movement; I now feel that I have come to the next convergence point on my soul's journey. I am keen to learn, share and help heal our Mother Earth in any way I can. This is a whole new chapter in my soul's growth and I anticipate many wonderful things happening through this Divinely orchestrated meeting. I am blessed and honored to be connected with you all.

Love & Light  
Kaylea  
[kaylea@mindhivecoaching.com](mailto:kaylea@mindhivecoaching.com)



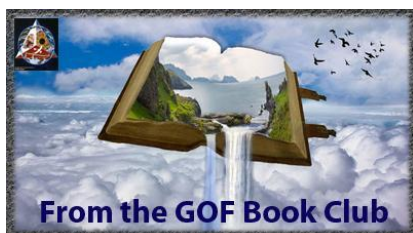
We would like to extend a warm welcome to the following new members who joined the Group of Forty between February 1st, 2021 and March 1st, 2021.



FIRST NAME	CITY	STATE	COUNTRY
Harold	Prescott	AZ	USA
Megan	Tucson	AZ	USA
Alejandro	Orlando	FL	USA
Vivian	Twin Bridges	MT	USA
Sonia	McKenzie Hill	VIC	Australia
Berkana Lisa	Green Valley	AZ	USA
Kate	Manchester		UK
Jessica	Prescott	AZ	USA
Lisa	Portland	OR	USA
Anne	Castle Pines	CO	USA
Victoria	Santa Fe	NM	USA
Diamond	Sacramento	CA	USA



**Birgit Smothers**  
 USA Group Coordinator  
[birgit@groupofforty.com](mailto:birgit@groupofforty.com)



## GOF Book Club

### KABBALAH AND THE ASCENSION

Chapter 18  
 By David K. Miller

#### **Apart from our mission to work on ourselves and remove our blocks, how does our light work heal Earth?**

I know you realize that your mission is not only to work on yourselves and to remove blocks but that you are also here on a mission that has been called "light work" and that will help to heal Earth. Many of you have been working so beautifully to send this energy to Earth. Many disasters have already been prevented or temporarily postponed because of the type of work you have been doing and the vibrations that people like you have been able to send into Earth.

The potential for devastation on Earth is very high right now. There are so many areas that are ready to explode politically, economically and geologically, and that does not even include the energy that is coming in from outside your solar system, such as asteroids.

#### **If Earth is hurting and suffering in what way can we help her?**

Yes, Earth is hurting. Yes, Earth is suffering. At the same time, as you are able to clear yourselves of some of your "imperfections," you will be better vessels of light. You will be better focused on helping Earth by sending love and taking care of Earth in any way you can. It could be as simple as picking up a piece of paper you see on the ground when you are on a walk. While doing something like that say to Earth, "I do this because I love you." That little thought can be very powerful, especially in the minds of people like you who are becoming vessels and focuses of light. Part of what you can do is to focus that energy and give it back. I ask you now to send love to Mother Earth. She is holding up very well, carrying the many, many souls that are on the planet.

There are many who are destroying her in various ways, however. There are many fires going on now on the planet - fires you do not even know about. There are many pollutants in the oceans. The oceans are continuing to die at the same rapid pace as you hear about the forests. The expanse of clean and open ocean is diminishing very rapidly. The extent of the problem of the ozone hole you have heard so much about is being covered. You can work by sending your love to that space. Any little thing you do will be helpful.

#### **What are the thoughts and message from Sananda to help clean Mother Earth?**

Decide not to harm the planet. When you are cleaning up Earth, send this thought to Earth. "I do this because I love Earth". It is a very powerful statement. Part of Sananda's message is: "Love thy neighbor as thy self." this expanded message is: "Love Earth as thy mother." You take care of your mothers. Most of you would do so without thinking about it, and your mothers appreciate it when you take care of them. Caring for your earth Mother, then, is one of the greatest gifts you can give her.



Jane Scarratt  
National Coordinator in Australia  
For the Group of Forty  
[janescurratt@gmail.com](mailto:janescurratt@gmail.com)



**Jeanette in Texas asks:**

Dear Juliano - There has been talk that the Age of Aquarius will be when the divine feminine rises and takes her place in equal balance with the masculine. Is this happening? Are galactic beings of light helping this? How can we accelerate this balancing?

**A** They say Amen which means "and so it shall be" or "I believe that it shall be". This is the meaning of the word Amen. The divine feminine is expressed galactically through the galactic Kachina. The divine feminine has been described in the mystical texts of the Kabbalah which identifies the divine feminine as the Shekinah and the mythology and descriptions of the Shekinah and what has happened to the divine presence is adequately explained in the kabalistic myth that the divine feminine has been extradited or excommunicated from this planet or is in exile, that would be a better way to say that.

If you look at the energy of Aquarius, I think that what this points to is that there are cycles of development or cycles of energy and this is in reference to the zodiac and as you may know, the zodiac is in related to the wobble of the Earth which is occurring approximately every 26,000 years. Every 2000 years approximately the Earth moves into an alignment of a new constellation around the circle of the wobble or the zodiac. We are in a period of cycles for the past 6,000 years approximately, which is focused on masculine energy and masculine energy has led to the domination of the planet, control of the planet, using of the environment for personal gain, using of nature for personal gain, and war. There are some positive advancements that you have seen in technology.

The divine feminine is the next cycle to influence humanity. The feminine, is represented by certain characteristics which I believe should be promoted to help bring in the divine feminine into your life. Some of those are: non-competition, unity consciousness, compassion, surrender versus control. But the surrender is not in giving up, but in allowing. The divine feminine would be exemplified by the relationship that humanity has towards nature and more directly towards women themselves because the Earth is a mother and women have to be honored.

In many areas around the world, humanity as you know on the planet is extremely deprecating towards women. This has been a system where women are enslaved or women are brutalized and the solution to bring in more of this energy is to our women, to heal women, to protect women, to see the feminine characteristics and honor them and ultimately to realize that the divine feminine is a part of the Godhead energy and that humanity has only dealt with one aspect, the male aspect but not the

feminine aspect. The feminine aspect and is also represented in the prophetess figure of White Buffalo Calf Woman in the Lakota mythology as well.

So how do you accelerate or bring in that energy: one, by honoring the feminine traits that I have talked about; two, by honoring the feminine Ascended Masters such as Quan Yin and also by acknowledging that the feminine has been exiled. We must do things to bring in, to invite the feminine energy into our lives and to acknowledge, which is occurring in certain spiritual people. God should not be looked upon just as masculine but that there is an interplay between masculine and feminine in the Creator.

This is an important development in the theology of Christ-consciousness and I do want to mention that the feminine energy has been degraded. Jesus was promoting the feminine energy through his relationship with Mary Magdalene but in later Church teachings, Mary Magdalene was lowered and called a prostitute so that she was therefore relegated to an inferior position but the truth is that Jesus was elevating women. This was not in alignment with the later followers and those in authority and so she was lowered in position and there was jealousy among the other apostles who were all male because they were unhappy with her close relationship with the Christ-consciousness.

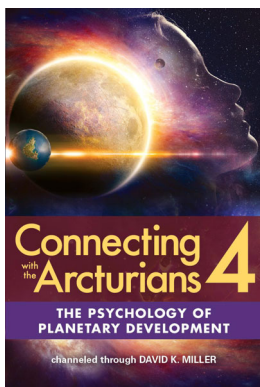


**Jane Scarratt**  
National Coordinator in Australia  
For the Group of Forty  
[janescurratt@gmail.com](mailto:janescurratt@gmail.com)

## ANNOUNCEMENTS



We are happy to announce that David's Book, "Connecting with the Arcturians," has been published in Portuguese in Brazil.



[David's Latest Book, Connecting with the Arcturians 4](#), is available now as an e-book and a hard copy book through Light Technology Publishing.

You can also find it on Amazon at [this link](#). This fourth book contains the most up-to-date information on ascension that is available, including new spiritual techniques to aid the process.

David's earlier books: "Connecting With the Arcturians" and "Connecting with the Arcturians 2" and "Connecting with the Arcturians 3" by David K. Miller, offer a comprehensive presentation on the ideas and views of an extra-dimensional, extra-terrestrial civilization on the Earth situation from the planet Arcturus.

Subjects included in this fascinating presentation are: 1) the Arcturians' view of the ascension or "rapture;" 2) what is the Fifth Dimension and how we, as the human race, are evolving toward the higher dimension; 3) the impending Earth peril and dangers to the Earth biospheres; 4) Jesus' (or Sananda's) role in the ascension and why he has a new name in the higher realms; 5) The Arcturian Stargate, a soul transfer station referred to in the Edgar Cayce's writings. When we finish the Earth's incarnations, we can travel to the Stargate for our next "soul assignment."

This first book also describes a new concept in spirituality, the Arcturian Sacred Triangle. For the first time, the Arcturians offer a way of uniting Earth's spirituality so that a planetary healing can occur. Readers will learn how ascended Native Americans' mystical Earth spirituality and galactic extra dimensional spirituality can be united to enhance a healing for the entire planet.



> David's book, [Connecting With the Arcturians3](#), is available for purchase in soft cover from [Light Technology Publishing](#).

> David's book, [Connecting With the Arcturians2](#), is available for purchase in soft cover from [Light Technology Publishing](#).

> David's book, [5th Dimensional Soul Psychology: Channelings by Vywamus](#), is available on the [Light Technology website](#).

> David's book in Spanish, "[Enseñanzas del Sagrado Triángulo Arcturiano](#)," is available in the Amazon.com Kindle Store and may be purchased [using this link](#). The follow-up to this book, "[Connecting with the Arcturians 2](#)", focuses on planetary transformation from a galactic perspective. It covers such topics as embracing galactic spirituality and planetary evolution, the aura enhancing technique known as shimmering and much more. The reader also gains more understanding of the planetary healing technology such as biorelativity and other global healing techniques.

You can buy these books at the following links:

[Connecting With The Arcturians](#) [Connecting With The Arcturians2](#)

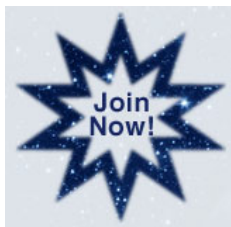
Visit [Light Technology Publishing](#) or call Light Technology at 800-450-0985 to order your hard copy of any of David's books.

All of these books are available as e-books and paperbacks on Amazon. Simply go to: <https://amzn.to/2zY9erY>

## Our Purpose: "40 Groups of 40 will be formed for Personal and Planetary Healing - Bringing us to the Fifth Dimension!"

We are dedicated to teaching humanity about the ascension to the Fifth Dimension. We coordinate the creation and maintenance of Planetary Cities of Light and conduct Biorelativity Exercises to create energy for positive change in the world.

To join Group of Forty, click the button below or visit <https://groupofforty.com/register>.



Copyright © 2021 David K. Miller | P.O. Box 4074, Prescott, AZ 86302 USA |  
[davidmiller@groupofforty.com](mailto:davidmiller@groupofforty.com) Phone: 928-776-1717

Visit our websites:

[USA/International: www.groupofforty.com](#)

[Spanish speaking countries](#)

[Portuguese/Brazil](#)

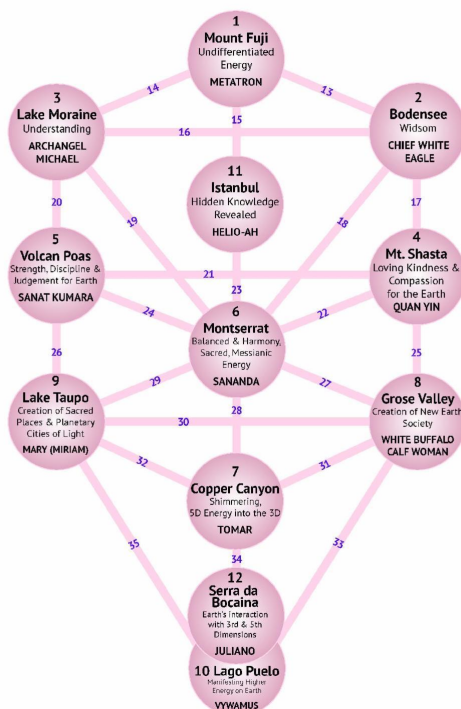
NEW: [Romania website](#)

Newsletter edited by David Miller and Jeri Denniston ([jeri@dennergroun.com](mailto:jeri@dennergroun.com)) with editorial help from Birgit Smothers. If you have articles to contribute, please send them to: [birgit@groupofforty.com](mailto:birgit@groupofforty.com) by the 18th of each month.

## Tree of Life

## Arcturian Tree of Life with Numerical Paths

Each Sphere is associated with a Spirit Guide and Sacred Location



www.groupofforty.com all rights reserved - updated October 2017

**Join the GOF Facebook Group and subscribe to our GOF YouTube channel and stay connected!**



**Upcoming Events**

**[International Activity Calendar](#)**

**[Spiritual Tools](#)**

Group of Forty | P.O. Box 4074, Prescott, , AZ 86302

[Unsubscribe {recipient's email}](#)

[Update Profile](#) | [Customer Contact Data Notice](#)

Sent by davidmiller@groupofforty.com powered by



Try email marketing for free today!