



Group of Forty

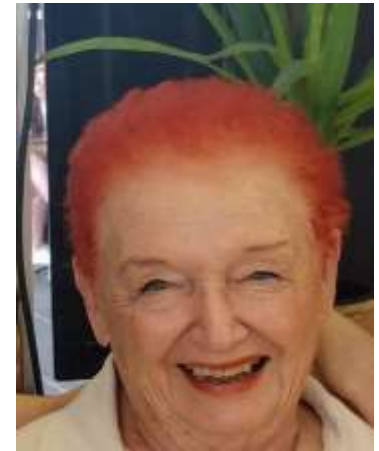
Australia

www.groupofforty.com

David K Miller Founder/Director



THOUGHTS FROM JANE...Everyone wants satisfaction. Even if you don't consciously think about yourself like this, you are still a human who wants satisfaction. It's how we define it that differs. But our psyche moves towards satisfaction. But, remember, God is a satisfaction!!! God is the ultimate satisfaction! That being a truth, you are going to move towards anything you see as bringing you satisfaction. Always be aware and paying attention to know if you are really in a state of satisfaction when you are doing something you THINK will give it to you. You may not be getting as much satisfaction from your satisfaction as you think you are!! We can develop addictions because of this. We don't become addicted to something because it's painful. We do it because a part of us believes satisfaction lies in whatever the addiction is, even if it only offers an opportunity to escape feeling pain. We need to pay close attention to what is really happening inside. When we deeply experience something we thought was going to give satisfaction, and is giving instead a feeling of desperate loneliness and a negative sense of self, we can begin to release that hold on the addiction and move to where satisfaction really lies. The opening up to higher energy comes when you choose to stop focusing on things that are difficult and frightening and focus on what you know to be your real satisfaction, on what gives you deep peace and delight.



Content

Page 2	Meet our members
Page 4	Q and A
Page 5	Cosmic Arrow
Page 6	Herbs/monthly M'ations
Page 7	PCOL news
Page 8	Biorelativity news
Page 9	Book Club
Page 10	PCOL Re-activations
Page 11	Namaste wildlife news.

Our online conference on September 26th will focus on the Arcturian Tree of Life- Juliano will present more advanced explanations- for personal and planetary healing. On a personal basis how people can balance themselves---on a planetary basis for ways of balancing the planet with our meditation work. More details re conference will be included in a flyer.

MEETING OUR MEMBERS

Hello everyone, my name is **Luciana Tworkoski Brito**. I was born in Brazil and I

came to live in Australia in 2009, because I always felt I had to live here. I lived in Sydney for 3.5 years, 6 years in Melbourne and I moved to Gold Coast in February last year.

I found GOF through a friend of mine, Andrea Amorim, who is a coordinator for the Costa Azul PCOL, sister city of the Gold Coast in the pcol network. I visited Uluru with Andrea.

I present a Lemurian Sisterhood Circles workshop online once a month. This is based on Kryon's teachings. We meditate and study about our cosmic blueprint and shamanic teachings connected to Lemuria.

I also conduct courses on Reiki, Psionic Tables, Sacred Geometry, Crystals, Pleiadian techniques, Akashic Reading and more. I have also studied International Trade, Technology, fitness and Nutrition.

My interest in spirituality started when I was as little as 5 years old. I have learnt from life that we, as Star Seeds are here to experience the source creation and when we remember we are one, we are able to contemplate life in a deeply and happier way. Blessings to you all. Luciana



INDIGENOUS SEASONS

Across the country, indigenous communities have a very different view of the seasons. Tremain Patterson, Banbai ranger at Wattle Ridge Indigenous Protected Area, near Guyra in the New England region of New South Wales, said his people had a far more fluid approach to the seasons. "Like much of the culture in some areas, knowledge was lost due to people not being able to speak language because it was forbidden," he said. "But to my knowledge, we didn't go off summer, winter, autumn, spring. We had our own bio-cultural indicators that we went off, that were taught and passed down through generations. Some of these indicators included flowering plants and animal behaviours. We told stories with the stars and the moon and also off the land, the country. Different waters, different types of air, when it is colder, hotter. We had all these indicators that our people read from. Just for instance, in June it was cold but dry and frosty. So it would be an excellent time for cultural burning, which would regenerate country."



Michelle McKemey/Yugul Mangi Rangers)

Group of Forty Australia Online Conference

SATURDAY SEPTEMBER 26TH 2020

MEETING AT 9:45 am EST for 10 am EST start TO

RECEIVE A GO-TO-MEETING LINK

PLEASE CONTACT : janes carratt@gmail.com

The two hour conference with David, Gudrun and Juliano will focus on Advanced Arcturian teachings, including the Arcturian Planetary Tree of Life. Juliano will also present more advanced teachings on personal and planetary healings that will:

- * * Demonstrate how people can heal themselves
- * * How balancing the planet can work with our meditations

There will be a break for lunch.

The conference will resume on another link at 1:30 pm EST
Jane, the National co-ordinator,
will give a short Committee report.

This will be followed by a powerpoint presentation
on the life of Mary Magdalene by our Sydney member
Martha Heeren

ALL ARE WELCOME



Friday's night in is the new going out

FRIDAY NIGHT ROUND TABLE DISCUSSION on The Ascension

Friday September 18th 7.30pm EST

**'Go to meeting link' will be sent to
everyone on
Wednesday September 16th**

This hasn't been tried before so we'll be looking at ways to improve the experience as we participate.

This is a great way for us, as members to come together and if it proves popular, we will organise one every two months.

FROM 'THE LAND OF THE LONG WHITE CLOUD' – NEW ZEALAND



Nature is amazing.

An incredible cloud formation over our biggest peak, Mt Cook, today September 6th. The formation is in the shape of the beautiful Tui - our most famous native bird. This bird has 55 different melodic sounds in his repertoire.

Mt Cook (Aorangi) is in the Southern Alps. The Māori name for Mt Cook –Aorangi - means Planet. Even more unusual to see this at this time.

Can you make out the white tuft under his beak?

They sing in the trees in my garden and I feel very honoured they choose to be there.

The Lord of all the East

Slave, be aware that the Lord of all the East is here.

A flickering storm cloud shows his lightnings to you.

Your words are guesswork.

He speaks from experience. There is a huge difference. Rumi

Q and A with Juliano through David K Miller

Carel in Sydney asks:

Over the past few months news media has broadcast clusters of the virus emerging in many slaughter houses and meat processing factories around the world. Thousands of workers have been infected. My question is: Could you give us a reason for this as it is easy to draw a conclusion between the link of brutal treatment and slaughter of animals and meat processing plants? Thank you.

A The relationship between the transmission of the virus in slaughter houses has to do with the abuse that humanity is doing to the plant and animal world now. The animals are being treated inhumanely and when they are slaughtered they are suffering and they are under a lot of stress. When they are under a lot of stress they give off more negative energy and vibrations which include the transmission of the virus.

This has been shown in China at the market place where the animals were inhumanely kept in cages for long periods of time before their death. they became extremely stressed and it was at that moment when they died where the transmission of the virus was most dangerous.

I will speak again about the Corona virus because there are so many problems in this transmission due to the technical problems. Remember that the Corona virus is a symptom of this planetary crisis and that the Corona virus must be taken and viewed from the perspective of the sixth mass extinction and remember that man's relationship to the animal world and the plant world is abusive.

Man is destroying the plant world. Man is treating the animal world as if they had no feelings and when you talk about such things as slaughter houses, here is a place where the animal world is extremely stressed out and at the moment of death the stress hormones of the animal are extremely high. This comes through confinement and many other awful mistreatments. When an animal is mistreated, then the chance increases of the release of any viruses at the animals death. This is one reason why you see the danger in the slaughter houses and why you see the danger in the Asian market places.

There needs to be a move towards humanity towards treating the animals more humanely. These animals are willing to die and they are willing to serve as a food source but they need to be treated with respect and love. As I said earlier, many Buddhists are working to ask for forgiveness to the animals that have died in such a horrible way.



A LIGHTER MOMENT



Drawn by Cheusa Wendt's father when writing to his brother, Frank



FROM THE COSMIC ARROW

From the Cosmic Arrow - Arcturus
Connection By Sjoerd Tyssen
Use These gifts to help your meditations.

Full Moon - Virgo Cycle -

2nd Sept' 20... 10 degrees.. Virgo/Pisces.

Arcturian Connection Message:- 'Degrees of Value and judgment vary to the plan.'

And:- 'Many came to watch the floats and celebration in the town square.'

Last Quarter Moon - Virgo Cycle -

10th Sept' 20... 18 degrees. Gemini.

Arcturian Connection Message:- 'Man alone cannot survive the desert.'

New Moon - Virgo/Libra Cycle -

17th Sept' 20... 25 degrees.. Virgo.

Arcturian Connection Message:- 'Danger comes when the signals are ignored.'

First Quarter Moon - Virgo/Libra Cycle -

24th Sept'20... 1 degree.. Capricorn

Arcturian Connection Message:- 'Upon a hill sat a man to ponder his next step.'

'sjoerdtysen@bigpond.com



MONTHLY PHONE MEDITATIONS IN AUSTRALIA

Saturday Q and A with Juliano September 12th 8.30am
EST 164595#

Saturday Grose Valley Re activation. September 12th
Noon EST 396637#

Sunday Monthly lecture September 13th 10.45am EST
164595#

Sunday Auckland Re activation. September 13th
12.15pm EST 396637#

Thursday Meditation September 17th – Gary 11am EST
164595#

Saturday Sydney Re activation. September 19th 12 noon
EST 396637#

Saturday Gold Coast ReActivation September 19th
1.30pm EST 396637#

Sunday Mornington Peninsula Re activation. September
20th 10.45am EST 396637#

Sunday Adelaide Meditation September 20th 2.30pm
EST 396637#

Sunday Perth Re activation September 20th 4.15pm EST
396637#

Thursday Meditation September 24th - Jane 11am EST
396637#

Saturday Conference 10am go to meeting September
26th

Sunday Tasmania Meditation September 27th 3PM EST
396637#

Thursday Meditation October 1st – Margie 11am EST
164595#

DAYLIGHT SAVING STARTS OCTOBER 4th

Sunday Monthly lecture October 4th 11.45am DST
164595#

Brisbane Re activation October 4th 1.15pm DST 396637#

Thursday Meditation October 8th- Janine 12pm DST
164595#

Saturday Q and A with Juliano October 10th 10.30am
DST 164595#

The Australian Biorelativity Meditators meet every
Monday, Tuesday and Wednesday nights at 7.40pm EST
on the phone conference line. Email Jane for
information.

Conference Call dial in No:- For Aust: the Access code
is : 396637#

For US meditations the Access code is: 164595#

Bringing Herbs into your life

Iceland Moss...the signature of this planet is very obvious. The idea is that it can achieve the highest height and it will remain there in very difficult environmental conditions. Spiritually, there is a direct correspondence. Individuals struggling in different areas of their personal involvement to attain higher development and who are also in difficult environments, will be nourished by this herb. There is an inner strengthening that takes place to remain fixed in one's goals; it is a little like mountain climbing. Indeed, mountain climbers are aware of this herb and see it frequently. When an individual is close to achieving this higher spiritual peak of a deep awareness of God or of how their work towards attaining spiritual goals has brought fruit, there is a deep fear. There is an unwillingness to continue. Sometimes this is due to the fear of facing oneself or of facing God. But sometimes it is also the simple idea that, after this is accomplished, there will be nothing left to do. This is important. It's like a mountain climber- there is joy when you get to the top but sooner or later, you have to climb down. What is happening is that the trust level of the highest vibration one is attaining is not being permitted. This inner trust of what occurs when the spiritual involvement is complete is not understood. This herb helps you to accept this, allowing it to be deeply felt. It is useful for individuals who are attempting these difficult feats. It's also good for individuals who are working towards goals that are not part of society. If you have been taught western ways and are now studying eastern mystical traditions, this herb is of assistance.

PCOL Coordinator News

If you are interested in creating a PCOL/PORL in your area, talk to Jane. I am always delighted to assist. A small area is preferable.

Juliano said:- I would like you in Australia to work on listing and bringing forth the strengths that your cities have as spiritual areas and what and how they could be transmitted to other Planetary Cities of Light.

Could you think about your Planetary City of Light and email Jane with your thoughts about the strengths of your city.

Jen in Adelaide suggested that the landscape in Adelaide is strong and powerful and there always feel great strength in it. She suggested that could be something Adelaide could share with the PCOL network.

We also have to look at the pathways assigned to our Planetary City of Light as well. The Mornington Peninsula PCOL for example has been assigned Pathway 33 between spheres 8, the Grose Valley (the Just Society) and 10 Lago Puelo (the third dimension). So their task is to focus on the qualities of those two spheres working together and the concept of the Just society being downloaded into the Earth into the third dimension.

**It Feels
GREAT
To Participate!**

FUTURE PCOL'S IN AUSTRALIA

THE Planetary Cities of Light Australia Committee are wondering if members could consider creating a small PCOL in their areas. You would need three members to work with you. If you live outside a current PCOL, do consider this. Jane and the Committee will give you all the support you need and the members in Australia will also support any new PCOL created.

Kerry is keen to create a Planetary City of Light in the Sutherland/Botany Bay area.

Carel will be creating a Planetary City of Light in Toronto, on the North Coast of NSW near Newcastle and Tomaree Head.

We would like to create another one on the Gold Coast more towards Tweed Heads.

In Brisbane, we would like to create one in the south and west of Brisbane.

We are working to create a community in Adelaide and Hobart so we can create PCOL's there.



BIORELATIVITY SNIPPETS

If you would like to be part of the Biorelativity Meditation Earth Balance Team, please email Jane Scarratt at janescarratt@gmail.com.

There is a calendar of events for USA and Australia on the web pages. All recordings of the meditations are there as well.

Remember to keep checking out the new web site we have created. www.earthmatters.world. There are up to date articles about what is actually happening on the Earth that is not reported in the media. There are links for more information.

From Yvonne in Sydney

I thought I would send you some pictures of a project I have had of late. The Nepalese people put prayer flags out with messages on them. I was looking at some videos of Tibet and watching all the prayer flags etc. and had a thought! Why don't I print some affirmations onto some prayer flags? So attached are the pictures of my creativity

Some of the affirmations Yvonne has used are:

- Let hidden and esoteric knowledge be revealed
- Let the energies of Messianic Light transform Planet Earth now
- Unity Consciousness for Planet Earth
- Let the repair of the biosphere begin now
- Let there be peace and calmness

Create your own.





BOOK CLUB AUSTRALIA The Kabbalah and the Ascension Chapter Two

by DAVID K MILLER

Is material wealth a hindrance to broadening your soul's development?

Some of you have been on paths that have allowed you to be extremely materially successful. Yet even though things have come very easily for you financially, you might not have enhanced yourself. Some of you are on soul paths filled with outward material ease so that you have the opportunity to develop free will to study or perhaps branch out in new directions. The opportunity in these cases is left up to you to develop. You then have the ability to fulfill your soul purposes and broaden your paths. Many of you now have the opportunity to finish a broadening of your soul's development.

How might we discover whether we are on our right Path?

By going into trances so we can open ourselves up to receive information. The paths we are maintaining are like doorways into different spiritual realms. Each path has a particular benefit and experience that will ultimately enhance the Souls development.

Does embarking on religious or spiritual study ensure that you can connect and understand your soul mission?

There are many people around you involved in spiritual work, but you must understand that there are many souls on the planet who have no sense of spiritual work at all and who have no spiritual sensitivities. This is the general condition on the planet. Even if you involve yourself in religious studies, you do not necessarily understand your soul path, and understanding your soul path is the final piece you must integrate to complete your mission.

How important is to have contact with the Soul?

Volumes can be written about the soul, about what it means to have a soul, and what it means to lose contact with it. Losing your soul contact is a worse condition than having a painful life filled with poverty. Evaluate a life not according to whether there is pain but according to whether there is any meaningful soul contact, despite the painful lessons. It could be that particular lessons have come through painfully because of misguided thought processes that can now be changed.

THE NEXT BOOK CLUB MEETING

Australia's next book club discussion will be **Friday, October 2nd 7.30pm EST** on Go to Meeting. We will be discussing Chapters nine and ten of "The Kabbalah and the Ascension" by David K Miller.

AROUND AUSTRALIA & N.Z.

Sydney NSW PCOL/PORL Meditations on **fourth Saturday of the month** at 12pm – 2pm DST. We have refreshments afterwards. Ring Carel 0416 054 818 or email: carelfillmer@gmail.com

GoldCoast, Queensland PCOL/PORL

Meditation on **last Saturday of the month** in Helensvale 1.30pm EST. Refreshments after. Ring Jane(07) 56657575 or email: janescarratt@gmail.com

Brisbane North, Queensland

Meditations are being held monthly in Brisbane. On the **1st Sunday of month** at Brackenridge. 10.45am EST. contact janescarratt@gmail.com

Melbourne Mornington Peninsula PCOL/PORL

Meets monthly for re activation of PCOL and social interaction between members. Meetings on **the Third Sunday of the month at 11.0.45 am EST.** contact janescarratt@gmail.com for more information

Grose Valley Blue Mountains NSW

Meditations to maintain the PCOL will be held **every third Saturday of month** at Noon EST at the Grose Valley Crystal, Blackheath Contact Liz: 0469 602487 email: eliz.clarke@yahoo.com.au

Applecross/Shelley Perth

Meditations to maintain the PCOL will be held on the **third Sunday of the month** at 2.30pm WA Time in Applecross or Shelley. Contact: Angela: angelasceremonies@gmail.com

Auckland NZ PCOL/PORL

Meet on **second Sunday of each month** at Farm Cove at 2.15pmNZST. Refreshments afterwards. Contact Janine:- janinemalcolm@xtra.co.nz

Adelaide: South Australia Meet **third Sunday of every month** at 2pm SA time in Westbourne Park. Contact Jen:- j.e.hamilton53@gmail.com

Hobart: Tasmania **Last Sunday** of the month at 3pmEST contact Jane: janescarratt@gmail.com

FROM STEPHEN IN U.K.

I would like to share this photo of my grandsons own interpretation of a crystal grid/medicine wheel that was sent to me unexpectedly/out of the blue.

He wanted to raise the energies and send out healing energies In his house and village in these trying times during covid 19

.He lives in the same village (Polbathic).

He is only 9 years old- thoughtful and kind, the future generation - the next generation to carry the torch. Enjoy the picture and the energies!!!



Stories from Trent Mills, Namaste Wildlife Shelter and Group of Fortv Australia member.

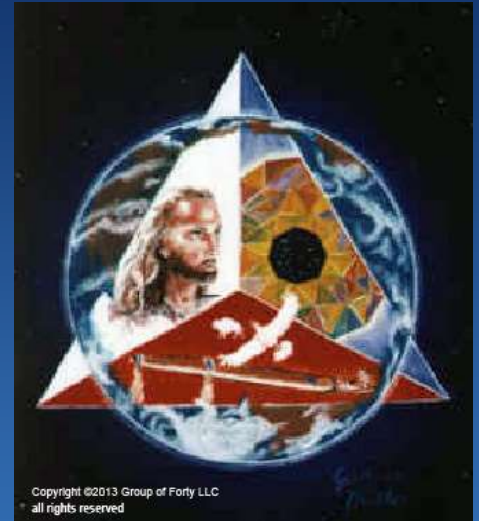
These two divine wombats are named Rocky and Sandy. They both came into care a week apart from each other because their mums were victims of car accidents. While wombats in the wild are generally solitary, we find that in foster care, wombats of similar age, will bond as you can see in these photos and it's good for them to have each other to help them get over the trauma of losing their mothers. In the wild, wombats eat grass, herbs, roots, trees and dirt. A gathering of wombats is called a 'wisdom', and as I say to Rocky and Sandy, 'I defer to their wisdom on all things wombat related'. As with all injured or deceased wildlife anywhere, please take the time to stop and see if you can render aid or check the mothers pouch, as awesome members of the public did for these kids. There is nothing more rewarding than rescuing a little soul - well, except for helping raise them. Namaste love, light and blessings to all. Trent



"40 Groups of 40 will be formed for Personal and Planetary Healing Bringing us to the Fifth Dimension!"

We are dedicated to teaching humanity about the ascension to the fifth dimension.

We coordinate the creation and maintenance of Planetary Cities of Light and conduct Biorelativity Exercises to create energy for positive change in the world.



**David K Miller, Founder/Director
Group of Forty**

Email: davidmiller@groupofforty.com



**Gudrun Miller, Founder/Director
Group of Forty**

Email: gudrunaz@yahoo.com



Jane Scarratt, Coordinator Australia

Email: janes carratt@gmail.com

