



Group of Forty

Australia

www.groupofforty.com

David K Miller Founder/Director



THOUGHTS FROM JANE

Time and money are only important here on the third dimension and are therefor illusory. Neither of them, really, have any value to your inner world. The basis of this illusion is that you must have money to survive – it takes time to make money – this means only a small amount of time is available to be spent on inner work, because time must be spent in making money for survival. The truth is that money only exists on the third dimension. What is time? Time is an alignment of your thoughts and the actions that you need to make to motive you whilst you are here on Earth. You need time to move through your Earth lessons. Money represents value and equals success on Earth. In the fifth dimension, money is not needed because everyone lives in unity. There is no separation, so there is no need to have exchange and reward. When the heart and mind are unified, there IS no greater reward and you don't need an exchange or reward for unconditional love. Why not measure time against your activities? Time is most enjoyable and passes very quickly when you are enjoying what you do. The Colonel, my husband, used to tell me that when you are working at something you love, you are not working at all because you are enjoying yourself. Allow yourself to feel the enjoyment of your activities in whatever form they take. Remember, no matter how much money you have, you can't buy more time. So spend your time wisely and with joy. I usually add to that "...even if it's through gritted teeth."



Content

Page 2/3	Meet our members
Page 4/5	Cosmic Arrow and Cornwall Capers
Page 6	
Page 7	Book club/Meditations
	Creative Comm/PCOL
Page 8	Worldwide reports
Page 9	
Page 10	Around the World, General.

Make an entry in your diary for our annual conference on October 20th and 21st 2018. We'll be meeting at Jemby-Rinjah Eco Lodge for our meeting on Saturday 20th and then having lunch together at a local venue. Sunday 21st we'll have a joint meditation at the Grose Valley crystal. It's wonderful to meet other members face to face. Email Jane for more details.

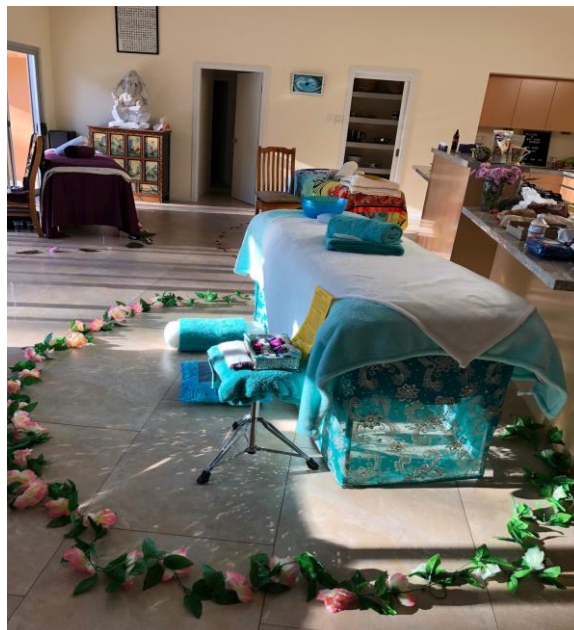
MEETING OUR MEMBERS

Hello everyone, my name is Magaly Krahall and I live in the southern part of Sydney with beautiful beaches close by. My background is Peruvian and my husband is Polish. We are truly international. We have seven children with their ages ranging from 6 to 23. They have grown up being aware of their spiritual light energy. I am very proud that my eldest daughter completed her yoga course. I work four nights a week at a restaurant and volunteer at the local school as the uniform shop coordinator. I have been a healer since I was very small. Even then, if I saw an injured bird I would place my hands on it to heal it. I have been a light worker for more than ten years. My favourite time is when we go to Glaston Bell in the Blue Mountains to meditate and place healing energy into the Earth. I have many wonderful memories of this place. I also have a consulting practice using young living oils. I am an Egyptian Emotional Clearing Practitioner. This gentle, yet powerful modality uses therapeutic-grade essential oils and other energy balancing techniques to promote a deep and sacred state of connection similar to a heightened state of meditation and mental clarity. Based on an ancient Egyptian ritual described in the temple of Isis for "cleansing the flesh and blood", this modality is performed in silence and with great reverence. During a session, you are anointed with up to 16 different emotional blends of essential oils. A session can take up to two hours. There are 110 oils that can be used for various problems. I am in my element when I am meditating in the bush surrounded with crystals. The air is so fresh, especially in Glaston Bell, and your senses are heightened. Glaston Bell has many beautiful meditation paths. Egypt, too, is close to my heart because I can remember in previous lives, walking inside the pyramids. I find it very sad to see the current conditions of the pyramids. I'm wanting to create a PCOL here in Caringbah. I became a member of Group of Forty at the 2017 annual conference in Grose Valley, Blue Mountains last year.

MAGALY KRAHAL



I was at an EETC conference in Byron Bay last weekend. Below is a treatment table for EETC.



My soul was excited to find my soul family it was the best weekend ever, especially seeing the energy of the White Buffalo Calf Woman. We are truly blessed to be here on earth. Regards Magaly

MEETING OUR GLOBAL MEMBERS

AISHA IRINA CHIRICA

Greetings starseeds! My name is Aisha Irina Chirica. I live in Romania.

I was always interested in the stars and I knew in my heart about our star family, but I forgot. It was the 11.11.11 Portal that changed my life! The new energies awakened the starseed inside. Looking for information about starseeds, I came across a text presented by Juliano on the internet. Half an hour before, I saw a brilliant orb of white light one meter away from me. I could feel my body vibrating when I read that text. It said: You need to heal and purify your body. Then the phone rang. A sales woman on the telephone was asking: „Do you need to heal and purify your body? We sell a special medicine made of 12 plants.” She enumerated the plants, and every one of them was addressing a medical issue in my body. As the sales lady was speaking, I got goosebumps and I visualized the silver-white colour filling the area of my body where I had problems. I knew it was the Arcturians! It was amazing! Later I purchased the medicine and lost 10 kilos and rejuvenated my body! At

that time there was no Group of Forty in Romania, but when a Romanian group was created, I joined it. I translated and published three of David's books in Romania. I am a Past-Life therapist, I work with Arcturian techniques (Sal Rachele's school of Time Line Healing). My past-life regressions and the biorelativity meditations I have been doing for years within the Group of Forty have taught me how to connect with the higher dimensions in order to receive and download information. Recently, I have initiated a project dedicated to reconnecting with the Ancestral Spirit. I have opened a blog and I have started to write articles and meditations about reconnecting with the ancestors in order to heal ourselves, our country and the Earth. I am amazed at how well this works. The method of reconnecting with the Ancestors and working with the sacred sites, the spiritual technology... are all inspired by the Arcturians. The Dacian ancestors we connect to come to us are from the stars! Connecting with the Ancestors brings us to our galactic origins and our star family! I want to thank the Arcturians and the Group of Forty for all the help it has given me to change my life! Blessings and love, Aisha Irina



CLIMATE CHANGES from PROFESSOR HENRY BRENNER.

Earlier this month (May 3) I attended a luncheon in New York for donors to the Environmental Defense Fund. This non-profit organization states as its mission “to preserve the natural systems on which all life depends. Guided by science and economics, we find practical and lasting solutions to the most serious environmental problems.” Operationally, the EDF has been involved in several legal actions to fight against recent efforts by ‘you know who’ (no names, no pack drill) to roll back core environmental protections, such as restrictions on emissions of toxic chemicals and to suppress climate policies designed to cut down on the release of greenhouse gases.

The main guest speaker was Professor Stephen Pacala of Princeton University who, a number of years ago wrote a paper describing “climate wedges”, which are practical actions we can take now to reduce the emissions of greenhouse gases. He began with the “bad news”, which was that the atmospheric level of carbon dioxide has now reached 410 parts per million (ppm). This is to be contrasted with the pre-industrial (early nineteenth century) level of about 280 ppm. The current level of carbon dioxide is now higher than at any previous time in the last eight-hundred thousand years.

But there was some good news. The cost of wind energy and solar energy has now come down so that, in many parts of the world, these renewable sources are now the cheapest form of energy, in terms of cost per kilowatt hour.

In contrast, the use of hydrogen as a non-polluting fuel (once touted as a very clean fuel - when it burns it produces only water vapor and no carbon dioxide) has not become very widespread. (To burn hydrogen one first has to make it, primarily by splitting water or decomposing natural gas, and these are very energy-intensive processes.) A large part of the anticipated reduction in carbon dioxide emissions rests on the substitution of natural gas for coal; natural gas when burned produces about 40% less carbon dioxide per unit of energy than coal and 30% less than oil. The implementation of nuclear energy, a potentially carbon-free source, has of course not expanded, and rightly so, after the earthquake and tsunami at Fukushima. On the positive side, the development of high capacity batteries and other energy storage schemes, necessary adjuncts to the expanded use of wind and solar, which are not always available, is now a very active area. And there are now several projects designed to capture and store the carbon dioxide that is now in the atmosphere. On balance the tone of the meeting was hopeful, but it is clear that we have a lot of work to do to protect the environment.



OUR CREATIVE MEMBERS
Gale Picard Dorian from
Los Angeles
Star Stories

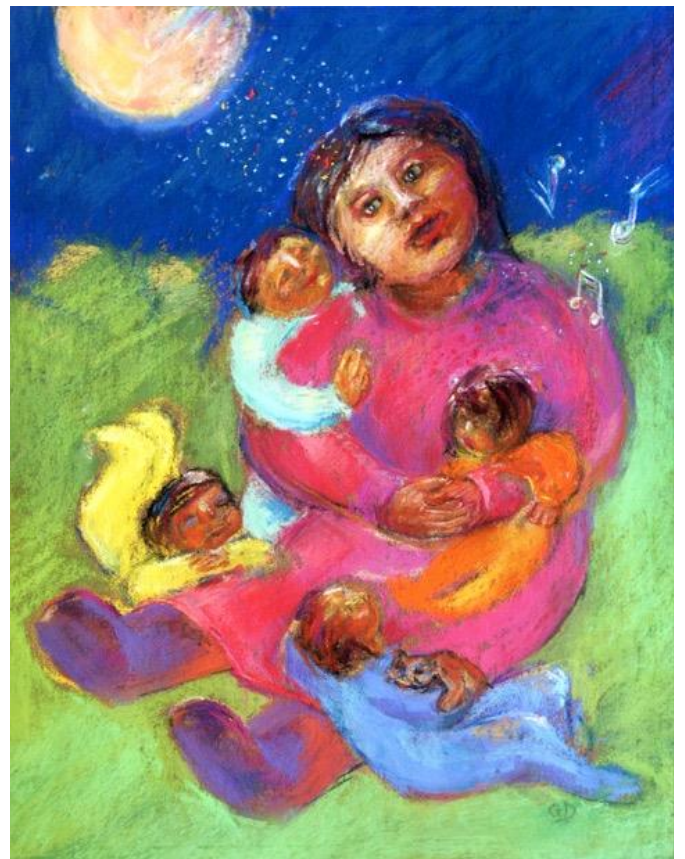
I thought you all might enjoy a series of pastels I created. Their theme is "Star Stories".

In loving appreciation,
Gale

Moon Stories



Young Adventure



Stingy Aloeswood

Fear and hurt are lassoes drawing you through a door. Lord, Lord, you say weeping. Green herbs sprout where those tears fall. Dawn comes, blindness drains away. Each day is eternity. Do not avoid your suffering. Plunge it into the Nile. Purify your stubbornness. Drown it. Burn it. Your body is a stingy piece of aloeswood that will not let go its healing power until you put it in the fire. Now shams leans near to remind me, *"that's enough sourness. No more vinegar."*

Rumi

DID YOU KNOW...

You may ask, “How would I use the ladder of ascension?” There are several important points that I will tell you about this ladder of ascension. First, you must be filled with love and unity to approach the ladder and be admitted to its energy field. You must be filled with oneness that can only be expressed through your foreknowledge of the fifth dimension. You must approach the ladder of ascension with unity consciousness, with your highest consciousness, and with your ability to perceive the unities of the polarizations. You must be able to perceive the perfection of the divine plan that is right before your eyes. You can hold this perception, even though you may not see exactly how everything is proceeding at normal levels of lower consciousness. Remember that at the ladder’s entry point — right by its first step — you will interact with its energy and enter a higher state of consciousness. Do not worry if you do not feel that energy pull or energy opening. Just know that your intent, your spiritual studies, and your meditations have given you the foundation to activate the energy and bring yourself into a higher state of consciousness. Then the rest of the ladder can appear. In the beginning, you will only see a few steps. As you get closer and begin to climb and look up, you will see many steps. The second thing of great importance is that you do not have to be in Jerusalem to reach the ladder. Juliano has taught you many techniques of thought projection. Yes, it would be preferable to be there in Jerusalem at the moment when the ascension energy is at its highest, at the moment you can ascend.

But at the same time, know that the ascension ladder and the mass ascension occurring at this point above the Temple of the Rock will have a positive effect of untold magnitude on the entire planet. It is one thing for an ascension to occur in remote areas like Lago Puelo, Argentina, where only a few people would actually witness it. But it is quite another matter when the skies open up, the ladder of ascension appears, and thousands of people begin to ascend over Jerusalem. You know how everyone watches Jerusalem. You know how the news of that area travels with lightning speed around the planet. Even if you cannot be there personally, you can thought-project yourself there. Now we have a Group of Forty member there to hold and anchor the light of ascension and the ladder of ascension for the starseeds and lightworkers. The third aspect of this ladder is that as you meditate, visualize, and transport yourself etherically to the heavenly ladder of ascension, you will experience a magnificent feeling of ecstasy and joy. I can assure you from my own personal experience that nothing can compare to the joy and the ecstasy of an ascension. No experience on Earth can even come close. You will grasp all of the pains, sorrows, trials, and tribulations that you have gone through during all of your lifetimes on Earth and you will receive them all with love and joy at that moment.

Miller, David K.. Biorelativity: Planetary Healing Technologies

FROM THE COSMIC ARROW

From the Cosmic Arrow - Arcturus Connection *By Sjoerd Tyssen*

Use These gifts to help your meditations.

Last Quarter Moon - Taurus/Gemini Cycle

-

7th June '18... 15 degrees. Pisces

Message:- 'Under these Trees lies the plate we Lost'

New Moon - Gemini Cycle -

14th June '18... 22 degrees. Gemini

Message:- 'Beyond that Cloud is another Doorway'

1st Quarter - Gemini Cycle -

20th June '18... 29 degrees. Virgo

Message:- 'In a Quarry one can also find Gems'

Full Moon - Gemini/Cancer Cycle-

28th June '18... 6 degrees.

Cancer/Capricorn Message:- Material Possessions can become a burden to bear'

And:-

'Too many fragrances can spoil the Potpourri'



IT'S RAINING CATS



Bentley, the Exotic, lives with Marie Ashworth on the Gold Coast.



Introducing Chinthe! She is a rag doll ~6 years old. Her name comes from the catlike creatures that guard the temples in Burma (& Tibet). She's my temple guardian! Angela Burchardt, Perth

CORNWALL CAPERS

Hello Starseeds This month - having listened to the monthly lecture I received the hint from our Arcturian friends - to talk about medicine wheels this month- loud and clear!! We work with crystals - which are the subject of our prior articles - in our Planetary City of Light meditations by creating crystal medicine wheels –see picture attached. Our home space is tight so we use a table for two tiers of energetic crystals. But you can use the space you have. All the jokes about British weather are true as we tend to drink our air as it's too wet to breathe! But you may have more inclement climates which can support a medicine wheel outdoors. In this particular medicine wheel pictured below we started on the bottom with a rose quartz centre with six Hematite crystals surrounding the perimeter to ground and anchor the wonderful energies of the medicine wheel down into Mother Earth. The crystals above - on the table - we have another Rose Quartz in the centre and Strawberry Quartz and Pink Botswana Agate together with a card showing the Etheric Crystal at Monserrat whose spirit guide is Sananda all inside a Copper pyramid as this helps to amplify the energy - in this case - unconditional love, nurturing and divine feminine. We chose these as we have a strong connection to Sananda energy and we always use the Monserrat Etheric crystal as each PCOL has a connection to an Ascended Master - and Sananda just resonates with us!! On the outer edge we have four smaller Rose Quartz and four Moonstones which again help to expand and intensify the divine feminine, high priestess consciousness. We change our medicine wheels - with different crystals and energies when we feel the need to make adjustments.

We also include in our medicine wheel representations for Air (feather) on a northern point; for the mind - Fire (candle in a Buddha holder) on the eastern point; for spirit - Water (in a Buddha holder) on the southern point and for emotion and Earth (stone) on the western point, for physicality. We usually shimmer our PCOL to the Moon-planet Alano to download as much fifth dimensional energy as we can manage through our crystal medicine wheel into the third dimension to raise the spiritual light quotient of the whole planet to heal the planet and bring it back into harmony balance and unity consciousness. Many of you may already work with these sacred spaces - for those who have not - give it a go - now is the time - come on people get downloading those energies!! Have fun, laugh and joy will flow - which is itself divine. Together in Unity Consciousness
Namaste
Stephen



Q AND A WITH JULIANO

Ryner Stoetzer from Canada asks: **Is Feng Shui a real thing or is it an old interpretation or paradigm of how energy works, and does it have any substance now ?** Juliano said:- The feng shui is based on vibrational energy. Everything in the universe has a unique vibrational frequency. This includes objects, plants and animals so when one is talking about Feng Shui one is referring to the vibrational field of how objects are interacting with the planet, with other plants and animals and even with the stars and other energies. Yes, of course the FS is a viable and realistic and very useful method for understanding and working with energy fields and most important, the interaction of energy fields. It is true that certain objects placed in a meridian energy field can block that energy. It is true that sometimes how a house is orientated towards the sunrise or sunset can have an effect whether it is north or south can have an effect. But also, this is the interesting part of Fs is how all that energy interacts with you the inhabitant of that energy field. Because each person has their own unique energy field and it can interact with the lines, with the meridians, even houses, even dwellings have meridian points. It is quite amazing. Even The shape of the house can have a dramatic effect depending how you want that energy to be used. So in summary , yes, Feng Shui is real and let us hope that people will take it seriously when they are planning for cities, planning for their homes or rooms.

Fi Mash in UK asks: **Given that the large majority of crop circles appear in the United Kingdom (and in the area near to where I live) can you give me some ideas and insights as to how I might use crop circles with my G of F members and fully utilise them in our planetary work and personal spiritual development"**

Well the crop circles are what we call deep archetypal galactic symbols- archetypes are

symbolic structures that carry on from generation to generation, culture to culture and these archetypes are galactic to galactic even -from this galaxy and other galaxies. The crop circles...some of these images are downloaded into the spirit of the earth. One way to further this work is to take a portion of that crop circle that you are able to comprehend. You will see that there is a lot of fractal geometry....fractal geometry is multidimensional and it is harder to work with it on flat surfaces. It is holographic and of course holographic is difficult to portray in the 3D world. I'm suggesting you look at the crop circle and take a portion of the geometric patterns and work with that either in terms of a medicine wheel or to re -create that geometric pattern – not the whole crop circle just the portion you could relate to – and re -create that geometric pattern either in your back yard or drawing it...then colouring it and working with the geometric patterns and it can affect you on several levels. It may trigger new wisdom and new intuition in you - It may- if you build a geometric pattern - I'm using the example of the medicine wheel- but some of these patterns are not medicine wheels even though they are in circles - that they are trines –they are like crystal energy fields that are meant to be absorbed by the spirit of the earth. We talk tomorrow about the dream catcher as a symbolic artefact that can be used in working with the noosphere and working with the sub conscious of the earth; but these crop circles have so many intricate patterns. That is why I am asking you to take a pattern from it that you are comfortable with and allow that pattern - see how that pattern can interact with you – it may not be logical. That's why I'm even suggesting you colour it. The fractal geometry of these patterns is meant to be integrated on a deeper psychic level. It could be meditating on those images. Seeing those images. Working with those images. That's my suggestion.

NEXT Q AND A IS JULY 14TH AT 9.30AM EST

MONTHLY PHONE MEDITATIONS IN AUSTRALIA

Sunday Meditation June 10th– Anne Scarratt

9.15am EST 0386720180 396637#

Thursday Meditation to strengthen USA June 21st

Gary Chaunce 10am EST, 0390280260 164595#

Sunday meditation June 17th– Jonathan Bell

9.15amEST 0386720180 396637#.

Thursday Meditation to strengthen USA June 21st

Gene Yoder 10am EST, 0390280260 164595#

Sunday meditation June 24th – Maralyn Palamara

9.15amEST 0386720180 396637#.

Webinar June 24th – The Event Horizon

6.30am EST Go to Meeting link will be sent.

Sunday meditation July 1st – Maralyn Palamara

9.15amEST 0386720180 396637#.

Wednesday Meditation June 27th - David Miller

8amEST 0390280260 164595#

Thursday Meditation from the Masters June 28th – Jane

Scarratt 10am EST, 0386720180 396637#

Sunday meditation July 1st – Micki Kellett

9.15amEST 0386720180 396637#.

Thursday Meditation from the Masters July 5th – Christofer

Aven 10am EST, 0390280260 164595#

Thursday Meditation from the Masters July 5th – Jan

Dugan 10am EST, 0390280260 164595#

Sunday meditation July 15th – Janine Malcolm

9.15amEST 0386720180 396637#.

The Earth Balance Biorelativity Meditators meet every Monday and Wednesday nights at 8pm EST and **Tuesday night** at 7pmEST on the phone conference line. Access code 396637# Email Jane for information.

Conference Call dial in No:- For Aust: ring (03) 8672 0180 or (03) 90280260, Access: 396637#

For US meditations, ring (03) 90280260, Access: 164595#

THE BOOK CLUB



Australia's next book club discussion will be **Friday, July 6th 7.30pm EST** We will be discussing chapter four of "Expand your Consciousness" by David Miller.

Bringing Herbs into your life

Cohosh (Black or Blue):- The easing of cyclical patterns that are difficult for an individual to handle, occurs with cohosh. People may find themselves periodically moving into states of difficulty in understanding life. The obvious example here is manic-depressive states on psychological levels, but spiritually, this happens, too. People sometimes go through periods of rejection and acceptance, bringing closer a spiritual oneness and then rejecting it for a time. There is an easing on the emotional level of the things that block an individual from a deep understanding of these cycles. Emotionally, you find reasons not to do things, like keep a diary of the cycles you are following, or come to know these habits more easily. Cohosh eases these emotional reasons. This is also good for people who learn in spurts. When they are learning they are learning from only one area and then they want to withdraw from it and put their attention on something else. Cohosh allows an easier focus to develop more readily.

PCOL Coordinator News

If you are interested in creating a PCOL/PORL in your area, talk to Jane. I am always delighted to assist. A small area is preferable.

Maintaining a PCOL/PORL is really a community service. We are benefitting all the inhabitants. We are being of service to our community.

Please be Ambassadors and talk about your Planetary City of Light to people you meet. I'm happy to send information for you.

Choosing a pathway on the Planetary Tree of Life.

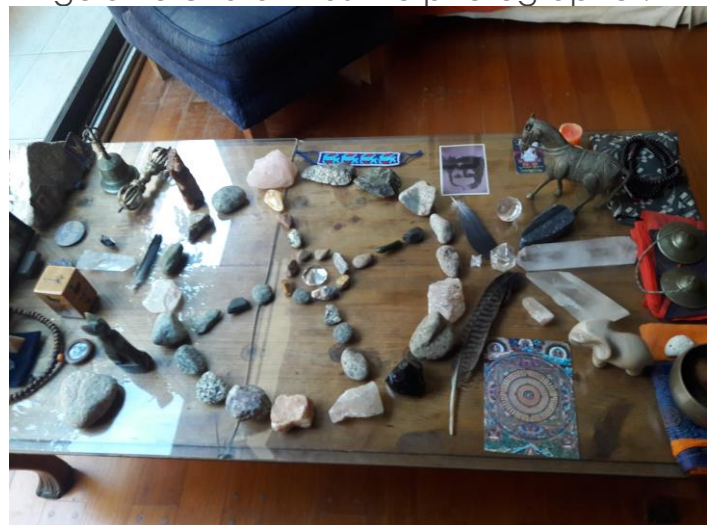
The paths on the Planetary Tree of Life represent a series of steps to achieve overall integration and planetary balance, which includes sustaining all life forms on Earth. We want to associate a Planetary City of Light or Ocean Reserve of Light with each path.

Each numerical path has a mission to explain the method of achieving the connection between the two spheres. EG there is a line connecting justice and compassion. There has to be a balance, a way in which these two spheres are communicating with each other energetically, not in isolation. The path is teaching how to create a balance between the two spheres that it is connecting. Each of the 11 Aust and NZ PCOL/PORL's pathways will be discussed individually and in detail in our newsletter, each month.



Perth PCOL re activation meditation.

Back row: Michelle Paul, Marylin Forbes, Melissa Stipanicev, Kristine Ward-Northey, Sophia Souklis, Michael Maynard, Elaine McLeod. Front row: Sandra Domenico, Kathryn Whitehand, Julie Zenoby. Angela Burchardt was the photographer.



Purvesh San Martin, National Co-ordinator for Argentina has this beautiful medicine wheel set up in his home. It is there permanently and used in every re activation meditation for his PCOL.

HELLO FROM BART IN HOLLAND

Our city of light

It began with reading about the 1000-year history of the area in which I live. As a result, I wanted to know the area better and so I bicycled through it and I saw everything in a new light. Especially when I got glimpses of the Deva of the area and the totem animal Swan, which live in great numbers here. It was then that I fell in love with the area and its Deva and I really wanted to do something for it. The idea rose to start a (planetary) city of light. I got a few people interested and so we started. Since we did not have 3 GOF-members it did not become a PCOL. Our city of light is a flat round area with a diameter of 12 km, consisting of meadows with many ditches. It is completely encircled by small rivers. We have put crystals in these rivers and in the centre of the area. A few hours before each session, I communicate with Juliano, just to let him know that we will shortly ask his help and to settle an energy field. Our session consists of 2 parts: the first part is cleaning and charging our COL with 5-D light from the crystal lake of Arcturus as Juliano requested. I lead this part of the meditation. The second part is doing lightwork for the world which we all do together based on co-creation. We all just bring in what we feel or see based on the principle that we are instruments of a process and our body-mind systems are used for this. People like to work like this and so do I. In the first year we came across a lot of heaviness from the people who have lived here throughout the ages. But little by little the aura has become lighter and nowadays during our ceremony, we experience a light which wants to radiate into the world. Since water is the abundant factor here, the light is often spread by the water ways.

We only do this once a month but I communicate with the area, the Deva and the crystals regularly. I also do some practical work such as collecting litter. In my 3-D consciousness I don't mind doing this practical work, but when I think about on it, I really love doing this. It is just a way to thank Gaia and this particular area and its Deva. Our group is made up of 7 people and 3 of us live in the area and I really feel that living in the area is a plus. For quite awhile, we haven't had the second meditation because nobody has been available. So lately I have been doing it on my own. But one of our group told me she would join me telepathically from her home and we would phone each other afterwards. This was so supporting! During my session I could feel her support and my ceremony was uplifted. I deeply felt my relationship with this work and with this area and that was marvellous. But what struck me most was the realisation of what connection in spirit can bring about!!! Not only between people, for it became obvious that Gaia will experience the same thing when we connect in spirit to her! It was a very beautiful reminder of how subtle this work is and how thankful Gaia is when we communicate with her on a regular bases. And how thankful she is for (planetary) cities of light!

May/June 2018



Biorelativity Coordinator News

If you would like to be part of the Planetary Healing Biorelativity Meditation Earth Balance Team, please ask Carel Fillmer for details. carelfillmer@gmail.com

We have found that repeating meditations is a wonderful idea because with repetition our visualisations become stronger as we become more familiar with the meditation.

EARTH BALANCE TEAMS

When the Earth Balance Team move onto a new meridian, there is no focus then, on the meridians that they have worked with. So the idea was created to ask members all over the planet to form small groups and take responsibility for a specific meridian. They are asked to meet each week for 15 mins to maintain the focus on that meridian. The response has been wonderful! Please join in this amazing work for Gaia. Juliano has assured us that Gaia is hearing us and is beginning to trust that we are always there supporting her. Gaia thanks you!!

Please join in any of the Earth Balance Teams meditations. Jane and her group meet on a Tuesday night at 7pmEST. Kerry and her group meet on a Wed night at 8pmEST. 0386720180 396637#

PLEASE NOTE: the entire Team will be focusing on the Ring of Fire meridian line for the next two weeks. There will be a meditation on this important meridian every day for two weeks. Please join in any of the teams presentations.

Our new Earth Balance meditation will be the ultimate biorelativity healing exercise for Gaia. We will be working with Helio-Ah.

Juliano advised me that when we are working with the 3D meridians, we are re-habilitating the meridians. The Arcturians use the 5D meridian system of the twelve etheric crystals to assist us.

THE CURRENT TEAMS ARE:-

Perth members have taken responsibility to maintain the Pacific Ocean Currents. The team comprises GOFA members Michael Maynard, Monika Jakli, Kathryn Whitehand and Sofia Souklis. They meet on skype.

Sydney north members GOFA members Yvonne Villien, Pat Scheveling and Gwen Bowyer are working with the Equator meridian.

Gold Coast and overseas members have taken responsibility for the North to South Pole meridian. The team comprises GOFA members Jane Scarratt, Anne Scarratt, Marie Ashworth, Helen Cowley, Joanne Manton and overseas members Paola Correa, Elisabeth Hoogduin, Mike Tong, Chloe Van Zuylen and Claudia Meija.

Christofer Aven in California leads a team maintaining the Ring of Fire Meridian. The team includes Jan Dugan from Alabama, Gary Chaunce from Ohio, Jeannette Carlisle from Texas.

Keith Kreyling in Boston, Massachusetts leads a team maintaining the Equator meridian. The members of the team are Keith and Tabitha Kreyling, Gene Yoder, Marc Alexander and Bonnie Sue Rauch.

Sydney members Kerry Wilsher, Rebecca Gresham, Carel Fillmer and Ulli Hansen have taken responsibility for the Murray Darling Basin. They will use Juliano's Golden Ball technology.

REMEMBER.....A planet cannot ascend by herself. A planet must have higher thought forms, higher beings, on it. Biorelativity is the ability to interact with the Spirit of the Earth with higher consciousness. On one level, biorelativity can create unity consciousness and a unified energy field.

BOOK CLUB

'EXPAND YOUR CONSCIOUSNESS'

by DAVID K MILLER

How important are thought fields and what other thought fields are there in the 3D?

They assist in understanding dimensions, the relationships between dimensions and also the soul and soul history. Electromagnetic, gravitational, quantum energy fields. They all interact.

Describe how your thinking creates a field?

Perhaps you have not considered that thoughts and the process of your thinking also create a field. Your thoughts create a field just like the electromagnetic energies create fields. The fields of thought have properties similar to electromagnetic fields. In fact, thought fields have similarities to quantum energy fields.

How important are our Soul Families in our incarnation?

Another aspect of the thought field is soul families. People are always asking about their soul families. They always want to know where their soulmates are. Soul families have certain common thought fields and thought patterns that attract each other like magnets. You are attracted to the souls who share a thought-field energy similar to yours. Sometimes there are souls who have stronger but similar thought fields. You become attracted to those people so that you can expand your own thought field. Think of the soul family as sharing common thought fields with you. You can use your thought field as an antenna.

When will ascension occur and what has been done to help us?

When there is proper alignment with the cosmos and our thought fields. Established 12 etheric crystals to help with 5D energy transmission on earth.

Are incarnations and eras we incarnate into, important. Discuss how important the Renaissance era was. Why do we choose a particular era?

A helpful way to begin the discussion of thought fields is to discuss incarnations and eras that you incarnate into. A good example is the era known as the Renaissance, when there was great openness to new ideas and new discoveries were being made. The arts and the sciences were beginning to flourish. This era was destined to bring new ideas to the world. It had a new electromagnetic force and a thought field. Progressive souls — inventors and great thinkers — who became attracted to the energy of that era began to incarnate at that time. The thought field of an era can be so strong that souls who are attracted to the field will begin to incarnate in order to experience that field of light and energy. Every era has a unique field of energy and field of thought.

Why have we incarnated into this current era?

This idea is significant to your era because it is an era of ascension. There is a 2012 field of light and energy that exists now in the 3D on Earth. You and others became attracted to it and incarnated to experience it. One of the factors in the decision to incarnate now was about experiencing this energy and light of ascension. Each incarnation provides different possibilities for specific soul advancement that can be experienced and digested in the 3D. I.e. each era can provide possibilities that exist in the 3D that will help the soul evolve.

What do the etheric crystals do and why were they placed here

Enhance the thought fields on the 3D and make the 3D attract the Arcturian thought fields in the 5D

AROUND AUSTRALIA

Sydney NSW PCOL/PORL. Meditations on **last Saturday of month at 2pmEST**. If any members are interested in joining us, please email Carel on carelfillmer@gmail.com or phone 0414 939 760.

GoldCoast Queensland PCOL/PORL

Meditation on **last Sunday of the month** in Helensvale 1.00pm. Ring Jane(07) 31391451 or email: janes carratt@gmail.com

Brisbane North Queensland

Meditations are being held monthly in Brisbane. Next meditation will be **1st Sunday of month** at Brackenridge 10.30am.
MeetUp: Arcturian Lightworkers Brisbane North
email: natalie_rankin@hotmail.com

Melbourne Victoria Mornington Peninsula

Meets monthly for re activation of PCOL and social interaction between members. Meetings on **the last Saturday of the month at 10.30amEST**. Ring Karen Stephenson for more information. 0410289727
email: karenstephenson08@gmail.com

Grose Valley Blue Mountains NSW

Meditations to maintain the PCOL will be held **every second Saturday of month** at Noon EST at the Grose Valley Crystal. Contact Liz: 0469 602487 email: eliz.clarke@yahoo.com.au

Applecross/Shelley Perth

Meditations to maintain the PCOL will be held on the third Sunday of the month at 2.30pm WA Time in Applecross. Contact Monika: email monika@lippert.hu

Auckland NZ PCOL/PORL

Meet on 2nd Saturday of each month at Farm Cove at 2.30pm. Refreshments afterwards. Contact Janine:- janinemalcolm@xtra.co.nz

We have three sleeping PCOL's in Balcolyn, Nelson Bay and the Dandenongs. They will be re activated when we have new members in those areas.

GOLD COAST, AUSTRALIA and COSTA AZUL, BRAZIL PCOL SISTER CITIES.



Brazil's third biggest city, Salvador in Bahia is more a collection of tiny seaside towns and villages that string along both sides of a peninsula, which separates the Bay of All Saints from the Atlantic Ocean. Each *praia* or beach has its own feel, from the fishing spots and famous sands of Barra in the south to the less touristy Bomfim in the north-west. Salvador was one of the first colonial cities in the Americas and one of Portugal's biggest slave trade centres; the city is still infused with African culture. Pelourinho, or the Old Town, sits high above the rest of the city on the west side and is the biggest draw for tourists. Find Tourist Information in Pelourinho on Rua das Laranjeiras.

TO TICKLE YOUR FUNNY BONE

A Polish immigrant went to the Main Roads Department to apply for a driver's license. First, of course, he had to take an eye sight test. The lady at the Motor Registry pointed to a test card on the wall with the letters 'C Z W I X N O S T A C Z' printed on it. 'Can you read that from where you are?' she asked. 'Read it?' the Polish guy replied, 'He's a very good friend of mine.' *Contributed by Jonathan Bell*

UNIVERSAL LAWS

How many people say "I would like to know God's Laws, but I don't know them". So, in this newsletter for the next few months, we're going to give you the Universal Laws. To merely read the Laws isn't enough. You must use the Laws and prove them correct. Everything works by Divine Law as there would be no order in the Universe without these Laws. It's very important for us to practice these Laws because a life without law and order can be a life of trouble, chaos, trial and error, or hit and miss. When you work with law you know the outcome of every venture **because** it is law and therefore it can't fail.

26. The Law of Dominion

"For He has given you dominion over the fowls of the air, the fish of the sea" – and "man, made in his image, a little lower than the angels", knows it not. O man, I AM incarnate in you. 'I' came to walk the earth as man, to experience life on earth, to know that it is good, or, whatever I make of it. The very ethers are yours to command, to mold into that which you desire".

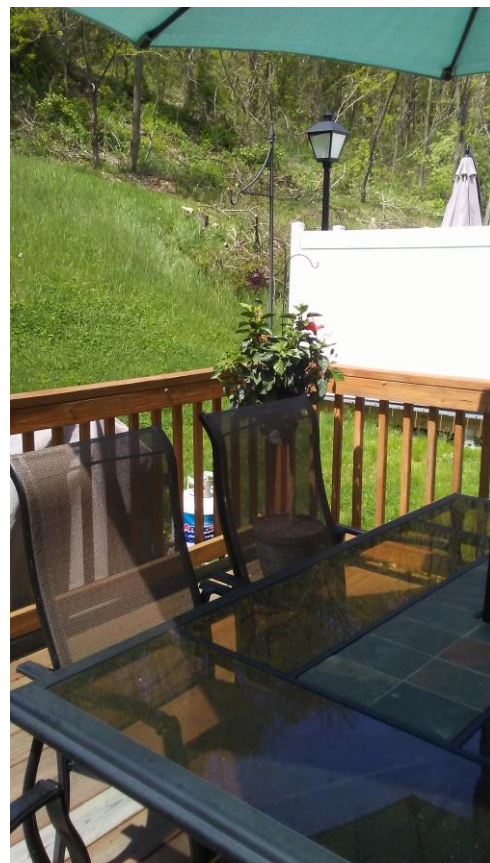
"Is anything hard to me?" When will you wake up from your deep sleep and distinguish the real from the unreal? Everything manifest must first have the "image" or real, in the form of an "idea" before it can be manifest in the objective. Now, reason this out: If all things are made in the beginning, there is nothing new under the sun. Man, with his great imaging power, sees it in the subjective, and as he clearly sees it, into outer manifestation.

Now, know this is Truth, and claim your dominion by proving this.

HOMES OF OUR MEMBERS



This is Marie Ashworth's back garden on the Gold Coast. The kangaroos cross over to drink in the river that runs by the side of the golfing resort complex.

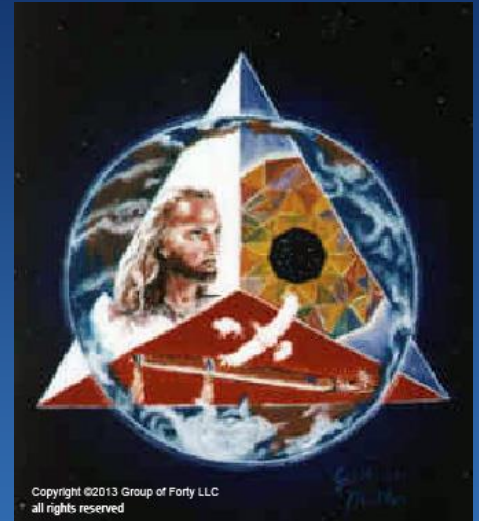


This is part of the large back garden of Keith and Tabitha Kreyling in Boston.

"40 Groups of 40 will be formed for Personal and Planetary Healing Bringing us to the Fifth Dimension!"

We are dedicated to teaching humanity about the ascension to the fifth dimension.

We coordinate the creation and maintenance of Planetary Cities of Light and conduct Biorelativity Exercises to create energy for positive change in the world.



David K Miller, Founder/Director Group of Forty

Web address: www.groupofforty.com

Email: davidmiller@groupofforty.com



Jane Scarratt, Coordinator Australia

Email: janes carratt@gmail.com

